

A Distributor's Perspective: JMI Pump Systems on Tsurumi's Performance



Tsurumi provides dewatering solutions that JMI can count on.

JMI Services LLC's Service Team Lead, Mike Cappello's first exposure to Tsurumi Pump came from direct experience in the field when visiting a jobsite where Tsurumi's LB-800 submersible pump was being used. Impressed by the level of reliability, this early experience set the tone for what would become a long-standing relationship with Tsurumi.

A Dewatering Solution that JMI Can Count On

Today, JMI continues to use Tsurumi's LB Series for dewatering jobsites. From Cappello's experience, few pumps match the LB-800's ability to move water quickly away while withstanding harsh conditions.

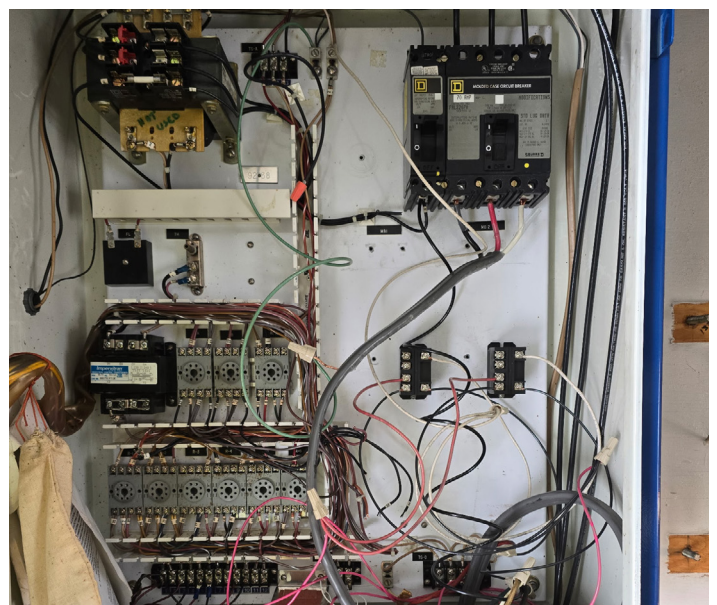
One standout application that JMI supported involved an abandoned steam tunnel where thousands of gallons of

shallow groundwater needed to be removed. Tsurumi's LB-800 pumps were installed by JMI with control panels and microdose float switches and have remained in service for over five years. Despite continuous exposure to groundwater and debris, the pumps continue to operate reliably. JMI's confidence in the LB-800 runs deep; JMI now keeps one on each of its service trucks, treating it as a go-to solution rather than a specialty tool.



LB-800 Dewatering Pump

A major factor behind JMI's confidence in Tsurumi is how the pumps handle abrasive materials such as sand. Tsurumi's rubber volute and impeller allow the pump to manage sand effectively without erosion that is commonly seen in metal components. The ability to disassemble and clean pumps in the field adds another layer of practicality,



Dewatering control panel supporting reliable pump operation in demanding field conditions.

A Distributor's Perspective: JMI Pump Systems on Tsurumi's Performance

JMI Pump Systems praises Tsurumi's LB Series for reliable, long-lasting dewatering performance in tough field conditions.



Tsurumi's products operating reliably in a demanding dewatering environment.

minimizing downtime and simplifying maintenance. For JMI, faster dewatering translates directly into operational efficiency. Quicker access to jobsites saves time for operators while reducing costs for end users.

Confidence that Comes from the Field

From small scale dewatering to high-capacity wastewater, JMI's experience with Tsurumi highlights what many service minded distributors value: equipment that performs consistently with a team that stands behind the product. Faster dewatering, reduced downtime, and long service life help JMI to operate more effectively while continuing to drive value to end users.

CONTACT

TSURUMI (AMERICA), INC.
1625 Fullerton Ct
Glendale Heights, IL 60139

Marissa Nge
Marketing Generalist
marissan@tsurumiamerica.com
(630) 547-2298

Yumiko T. Lindgren
Marketing Manager
yumikot@tsurumiamerica.com
(630) 547-2245

 Follow Tsurumi America on Social Media



ABOUT TSURUMI

Tsurumi (America), Inc., a division of Tsurumi Manufacturing, was founded in 1979. Headquartered in Glendale Heights, Illinois, Tsurumi (America), Inc. has bases in Quebec, Canada; El Paso, Texas; and Salt Lake City. Globally, Tsurumi is active in 45 countries and has been an innovator in the pump industry since 1924. Tsurumi (America) is a provider of leading pumping technology in construction, civil engineering, mining, industrial wastewater, municipal wastewater, sewage treatment, flood control and scenery creation fields. Tsurumi products are backed by independent, third-party verification. Beyond leading pump technology, Tsurumi (America) is recognized for its robust distribution network and one of the largest on-hand inventories in North America.